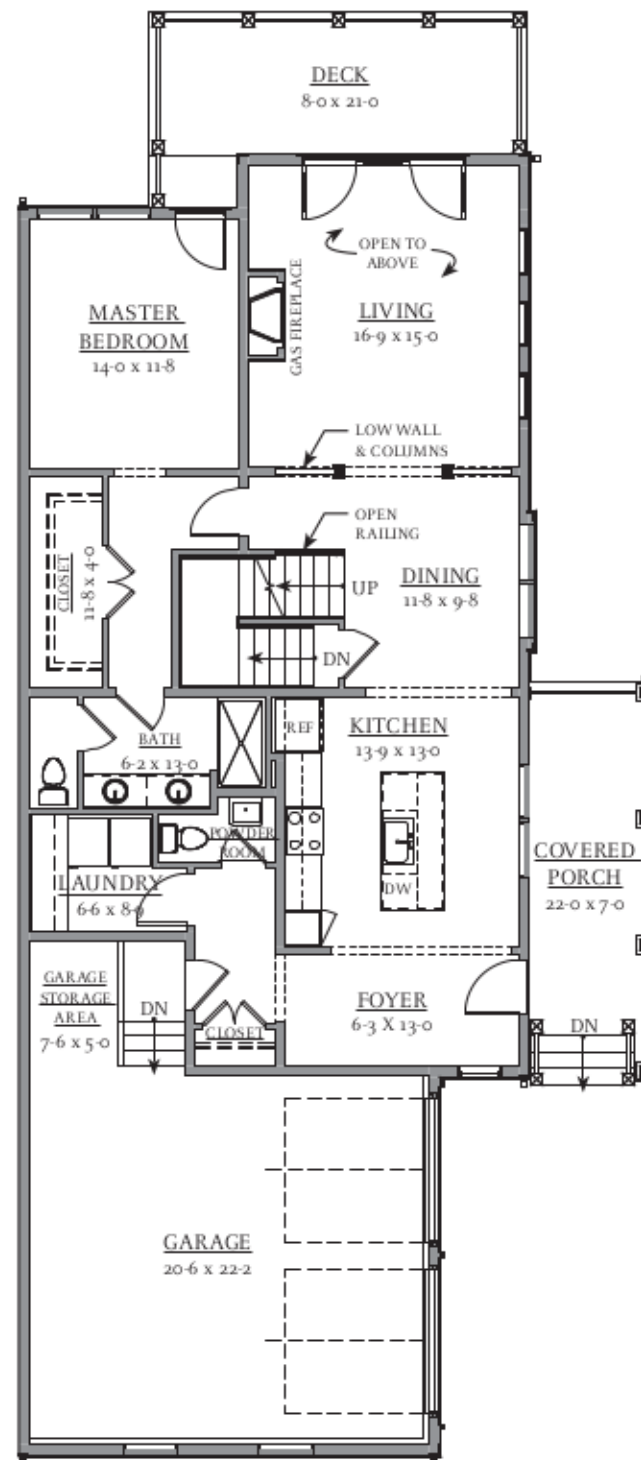
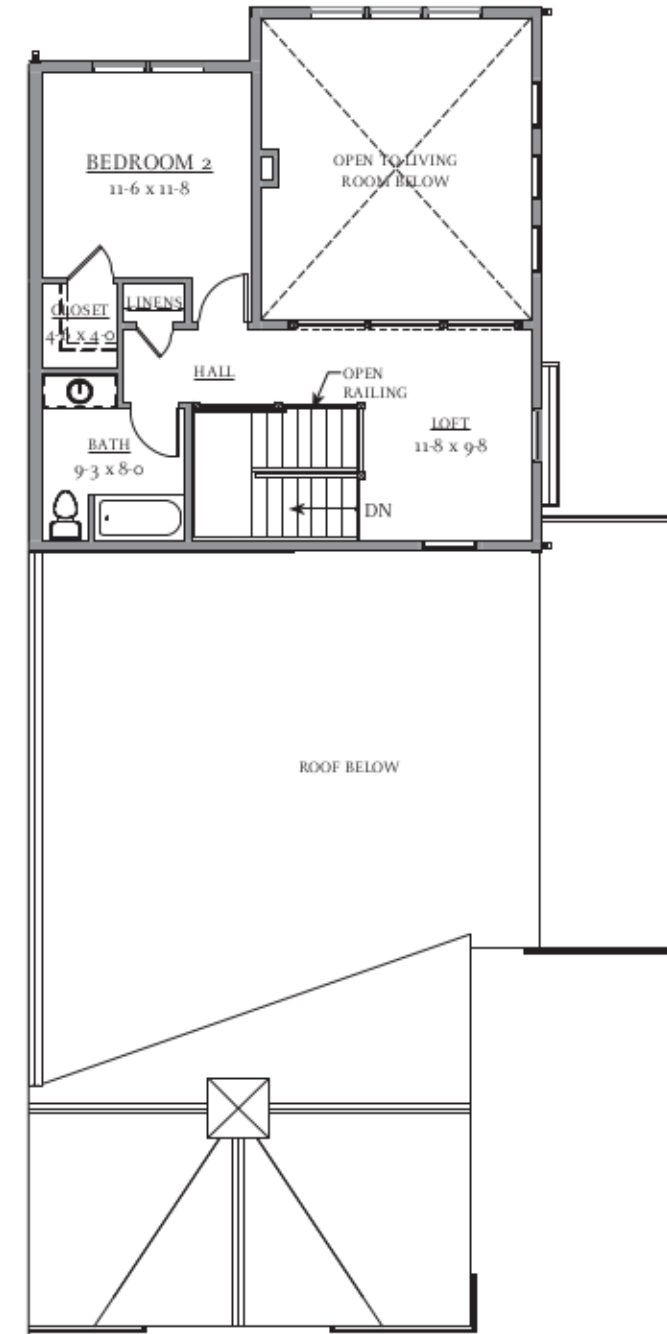


LOWER LEVEL PLAN



FIRST FLOOR PLAN



SECOND FLOOR PLAN

SQUARE FOOTAGE TOTALS	
Total Heated -	2,974 sf
Basement Heated -	1,254 sf
First Floor Heated -	1,260 sf
Second Floor Heated -	460 sf
Total Unheated -	549 sf
Garage -	549 sf
GRAND TOTAL -	3,523 sf

KETTLE POINT - BUILDING 18 (VAULTED GREAT ROOM)

PROPOSED PLANS
FEBRUARY 7, 2017

SCALE: 3/32"=1'-0"
0' 1' 2' 4' 10' 20' 40'

