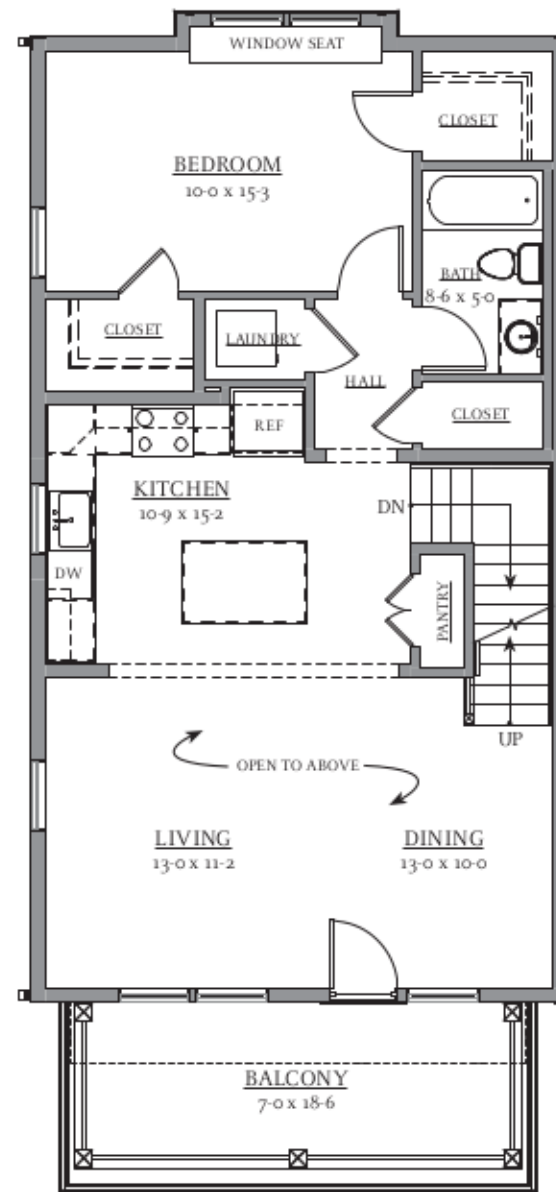
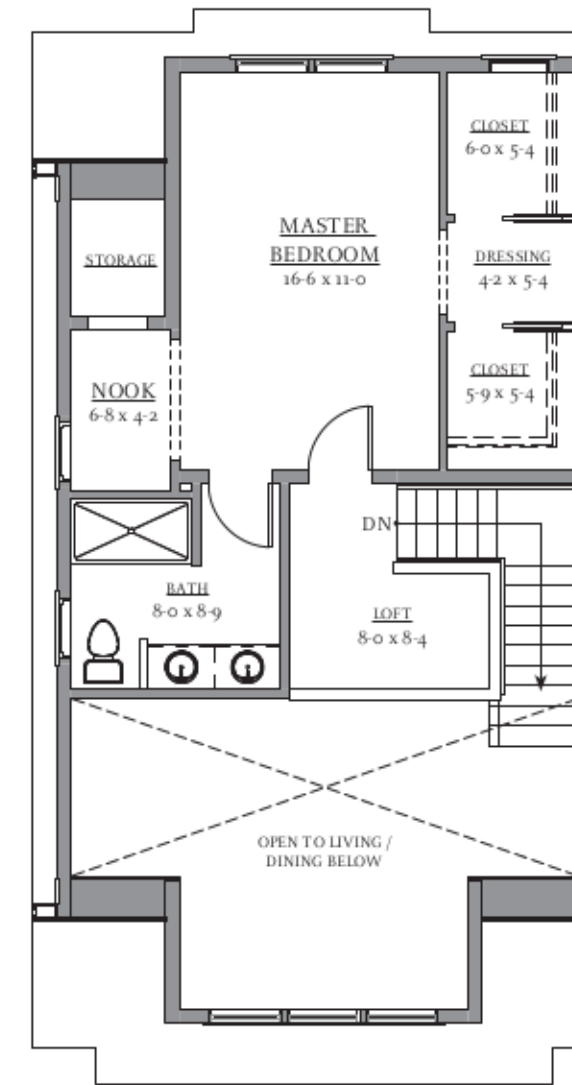


FIRST FLOOR PLAN



SECOND FLOOR PLAN



THIRD FLOOR PLAN

SQUARE FOOTAGE TOTALS	
Total Heated -	1,735 sf
First Floor Heated -	417 sf
Second Floor Heated -	838 sf
Third Floor Heated -	480 sf
Total Unheated -	461 sf
Garage -	461 sf
GRAND TOTAL -	2,196 sf

# KETTLE POINT - BUILDING 11 (TWO BEDROOM UNIT)

PROPOSED PLANS

FEBRUARY 7, 2017

SCALE: 1/8"=1'-0"

