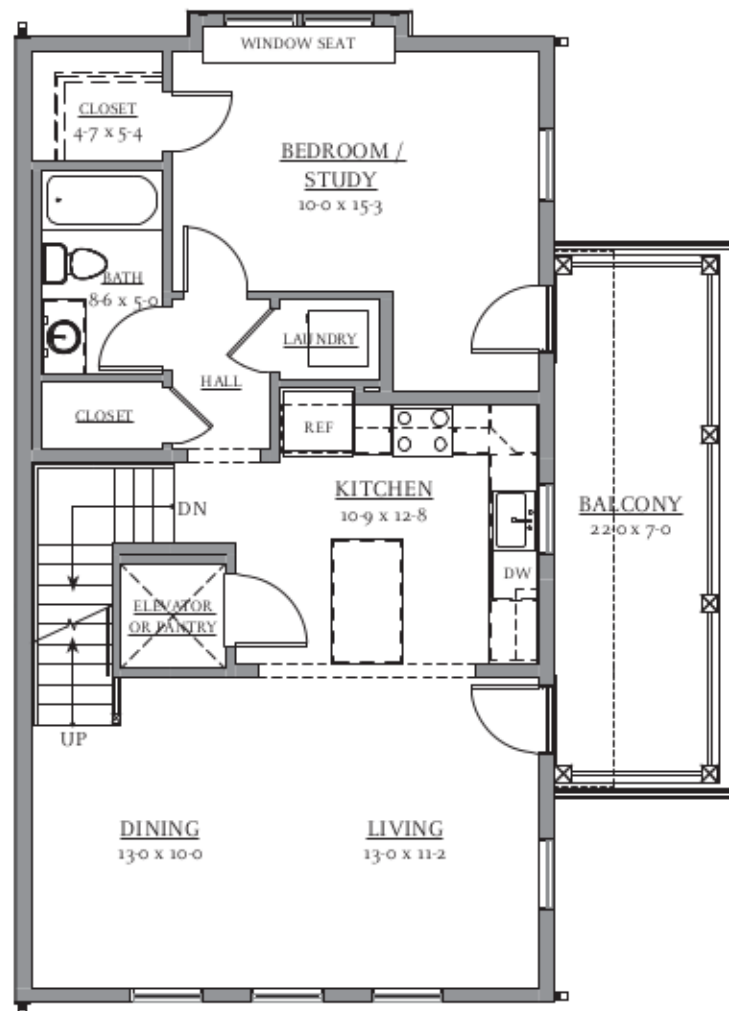
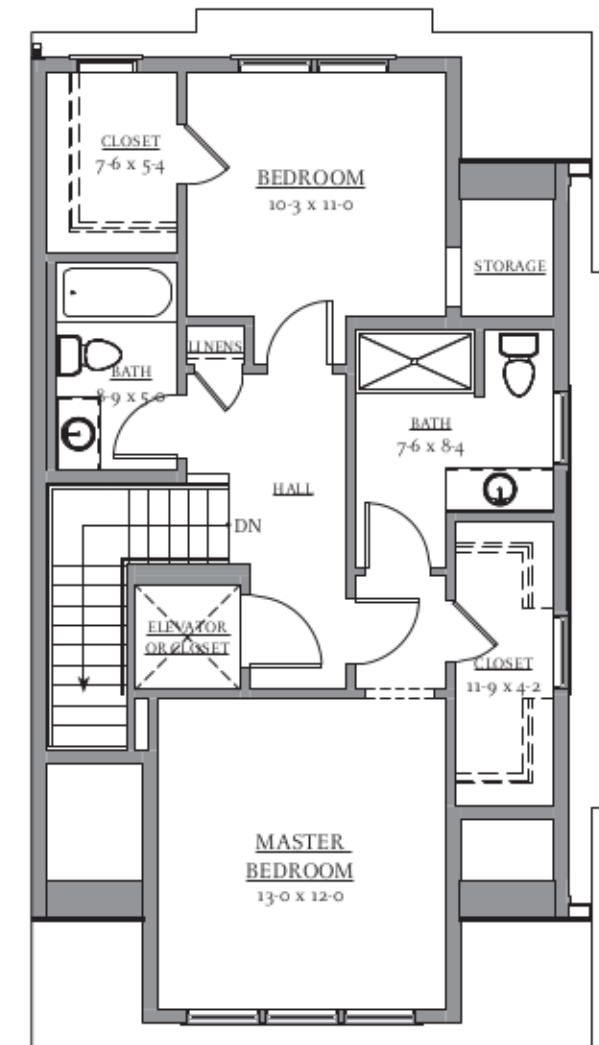


FIRST FLOOR PLAN



SECOND FLOOR PLAN



THIRD FLOOR PLAN

SQUARE FOOTAGE TOTALS	
Total Heated -	1,939 sf
First Floor Heated -	417 sf
Second Floor Heated -	838 sf
Third Floor Heated -	684 sf
Total Unheated -	461 sf
Garage -	461 sf
GRAND TOTAL -	2,401 sf

KETTLE POINT - BUILDING 11 (THREE BEDROOM UNIT)

PROPOSED PLANS
FEBRUARY 7, 2017

SCALE: 1/8"=1'-0"
0 1' 2' 4' 8' 16' 32'

