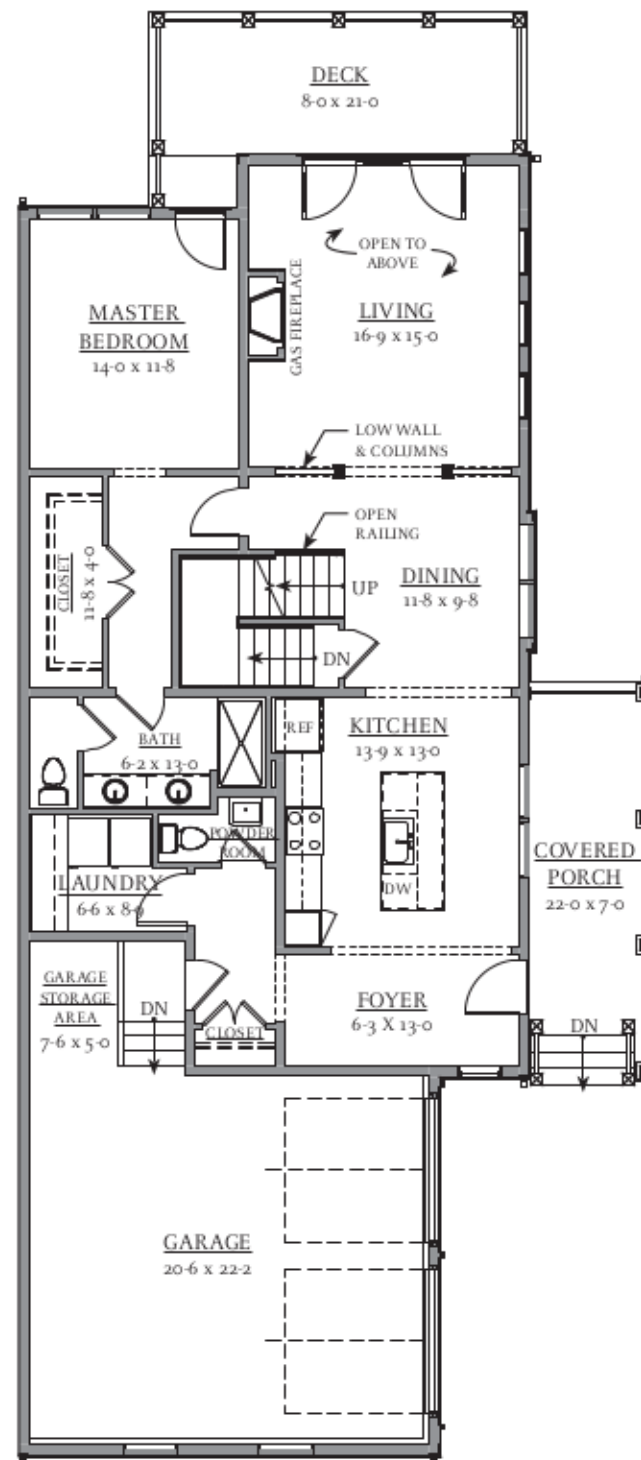
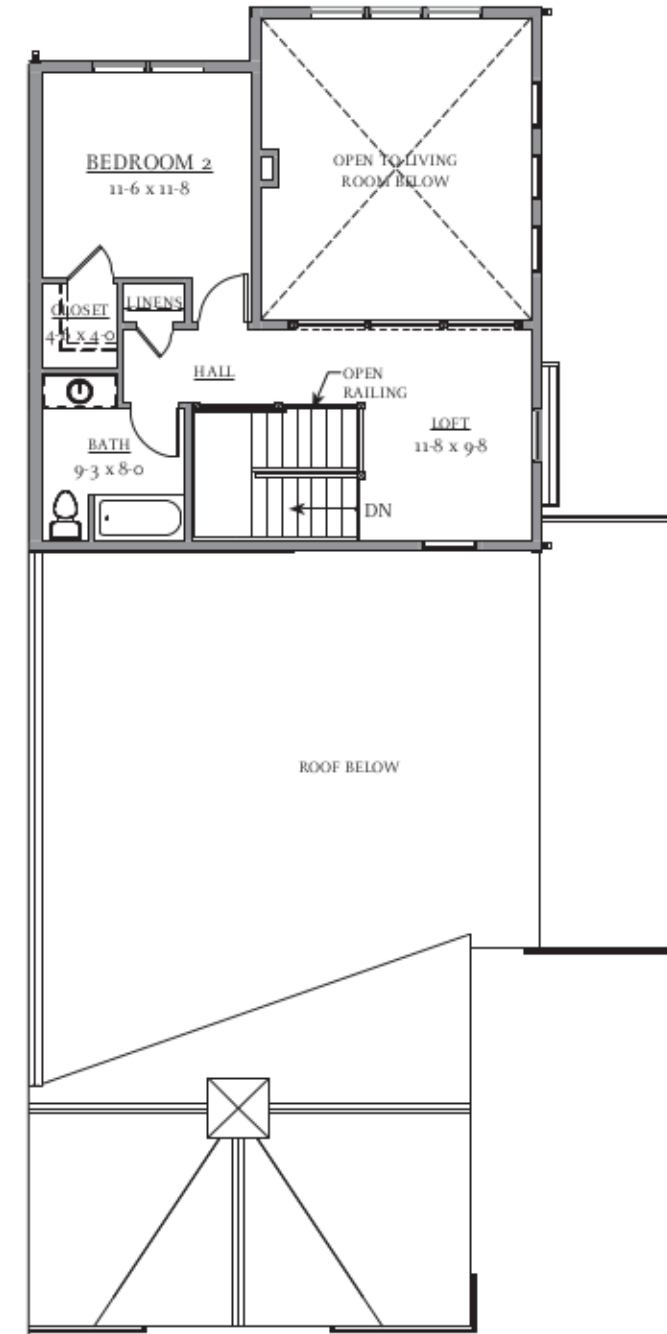


LOWER LEVEL PLAN



FIRST FLOOR PLAN



SECOND FLOOR PLAN

| SQUARE FOOTAGE TOTALS |                 |
|-----------------------|-----------------|
| Total Heated -        | 2,974 sf        |
| Basement Heated -     | 1,254 sf        |
| First Floor Heated -  | 1,260 sf        |
| Second Floor Heated - | 460 sf          |
| Total Unheated -      | 549 sf          |
| Garage -              | 549 sf          |
| <b>GRAND TOTAL -</b>  | <b>3,523 sf</b> |

# KETTLE POINT - BUILDING 18 (VAULTED GREAT ROOM)

PROPOSED PLANS  
FEBRUARY 7, 2017

SCALE: 3/32"=1'-0"  
0' 1' 2' 4' 10' 20' 40'

