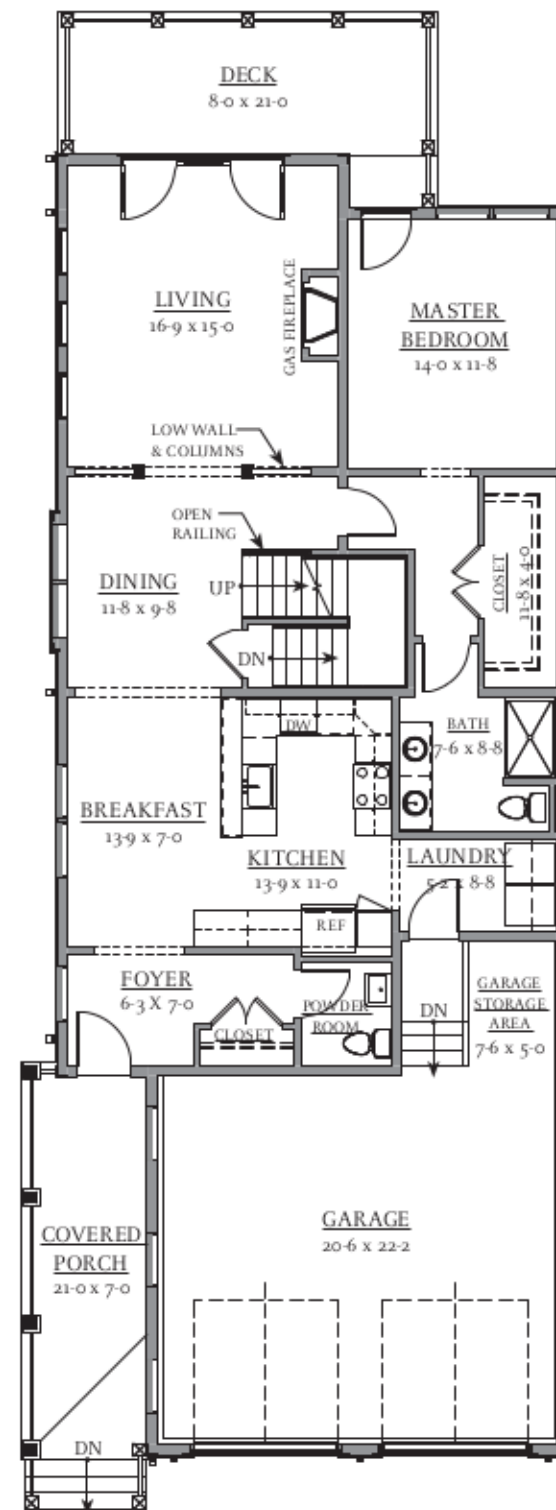
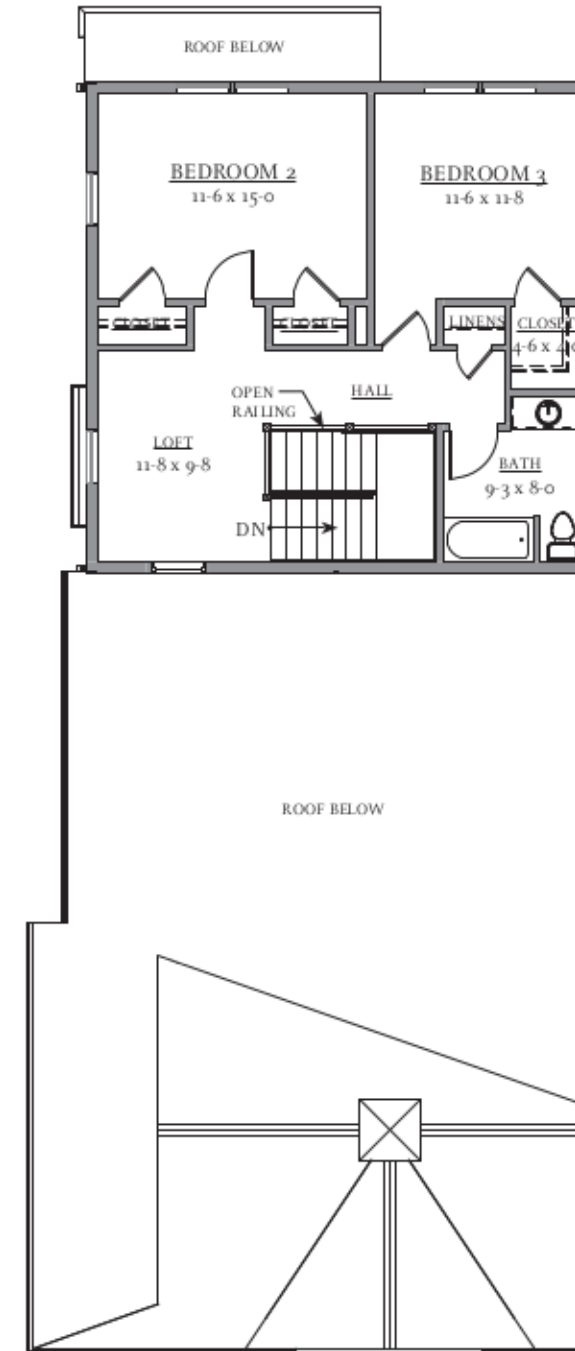


LOWER LEVEL PLAN



FIRST FLOOR PLAN



SECOND FLOOR PLAN

SQUARE FOOTAGE TOTALS	
Total Heated -	3,196 sf
Basement Heated -	1,254 sf
First Floor Heated -	1,260 sf
Second Floor Heated -	682 sf
Total Unheated -	549 sf
Garage -	549 sf
GRAND TOTAL -	3,746 sf

KETTLE POINT - BUILDING 18 (THREE BEDROOM UNIT)

PROPOSED PLANS

FEBRUARY 7, 2017

SCALE: 3/32"=1'-0"

